

149°46'0"W 149°45'0"W 149°44'0"W 149°43'0"W 149°42'0"W 149°41'0"W 149°40'0"W 149°39'0"W 149°38'0"W 149°37'0"W 149°36'0"W 149°35'0"W 149°34'0"W

JBER Boundary and Training Areas

JOINT BASE ELMENDORF-RICHARDSON

January 2013






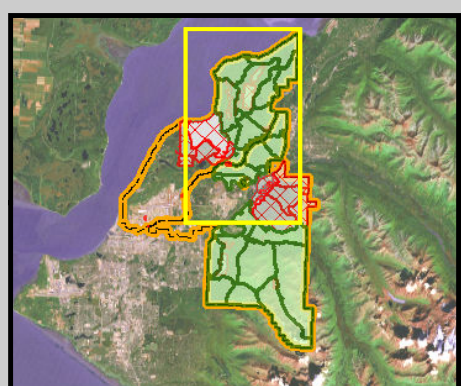
For general reference and recreational use only. 673 CES/CEANC does not warrant specific information concerning the origin, spatial accuracy, completeness or other specifications of the data. The data are complex and time sensitive, and may contain some non-conformities, defects or errors. Background imagery provided by National Geographic Topo! program.

Map Created by 673 CES/GeoBase Office
Requests and inquiries: geobase@elmendorf.af.mil or 384-2322
Cartographer: J. GUMPERT
Location: JBER_Recreation_Topo_15x25.mxd

Legend

Training Areas

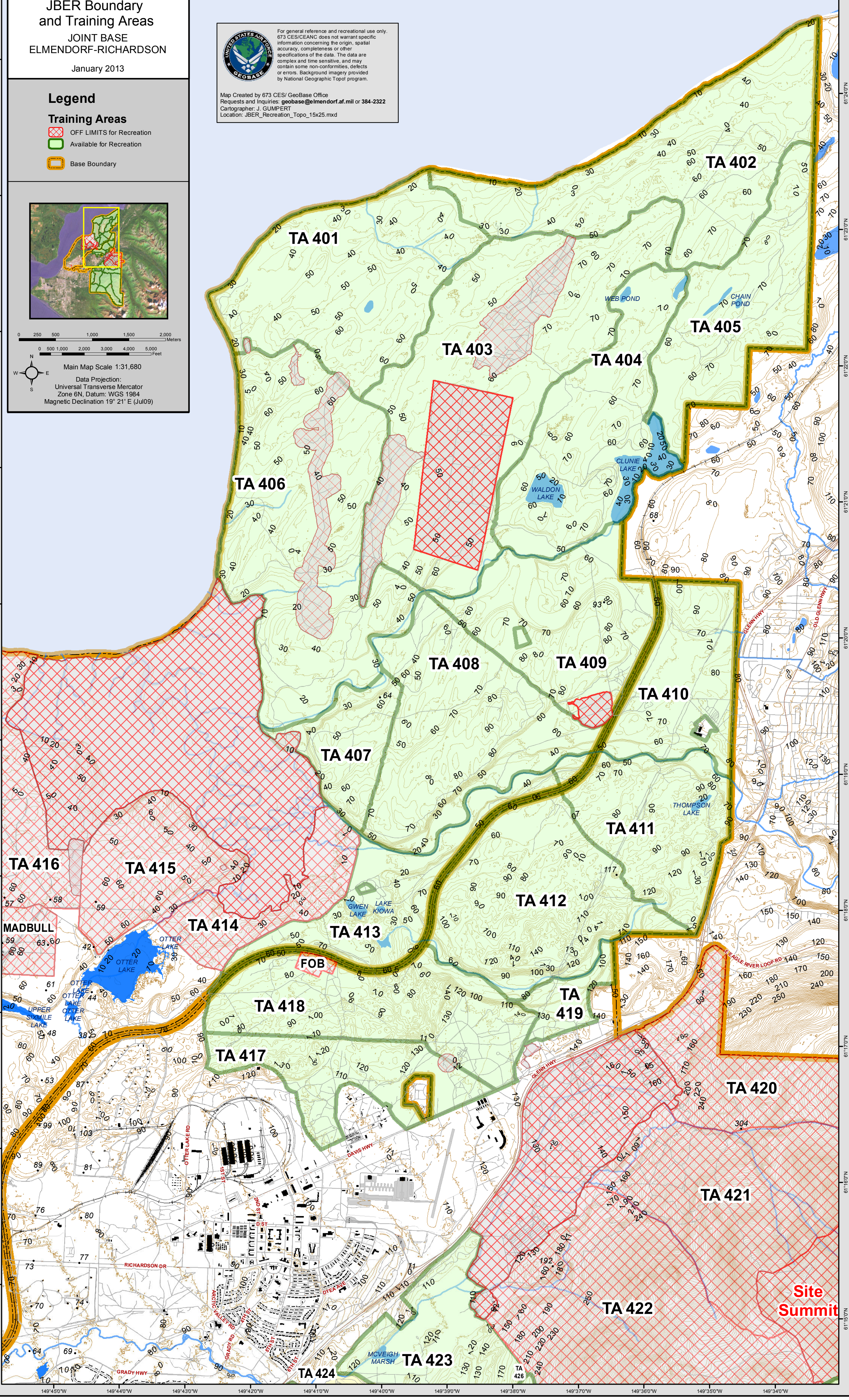
-  OFF LIMITS for Recreation
-  Available for Recreation
-  Base Boundary



0 250 500 1,000 1,500 2,000 Meters
0 500 1,000 2,000 3,000 4,000 5,000 Feet

Main Map Scale 1:31,680

Data Projection:
Universal Transverse Mercator
Zone 6N, Datum: WGS 1984
Magnetic Declination 19° 21' E (Jul09)



Site Summit

149°45'0"W 149°44'0"W 149°43'0"W 149°42'0"W 149°41'0"W 149°40'0"W 149°39'0"W 149°38'0"W 149°37'0"W 149°36'0"W 149°35'0"W 149°34'0"W