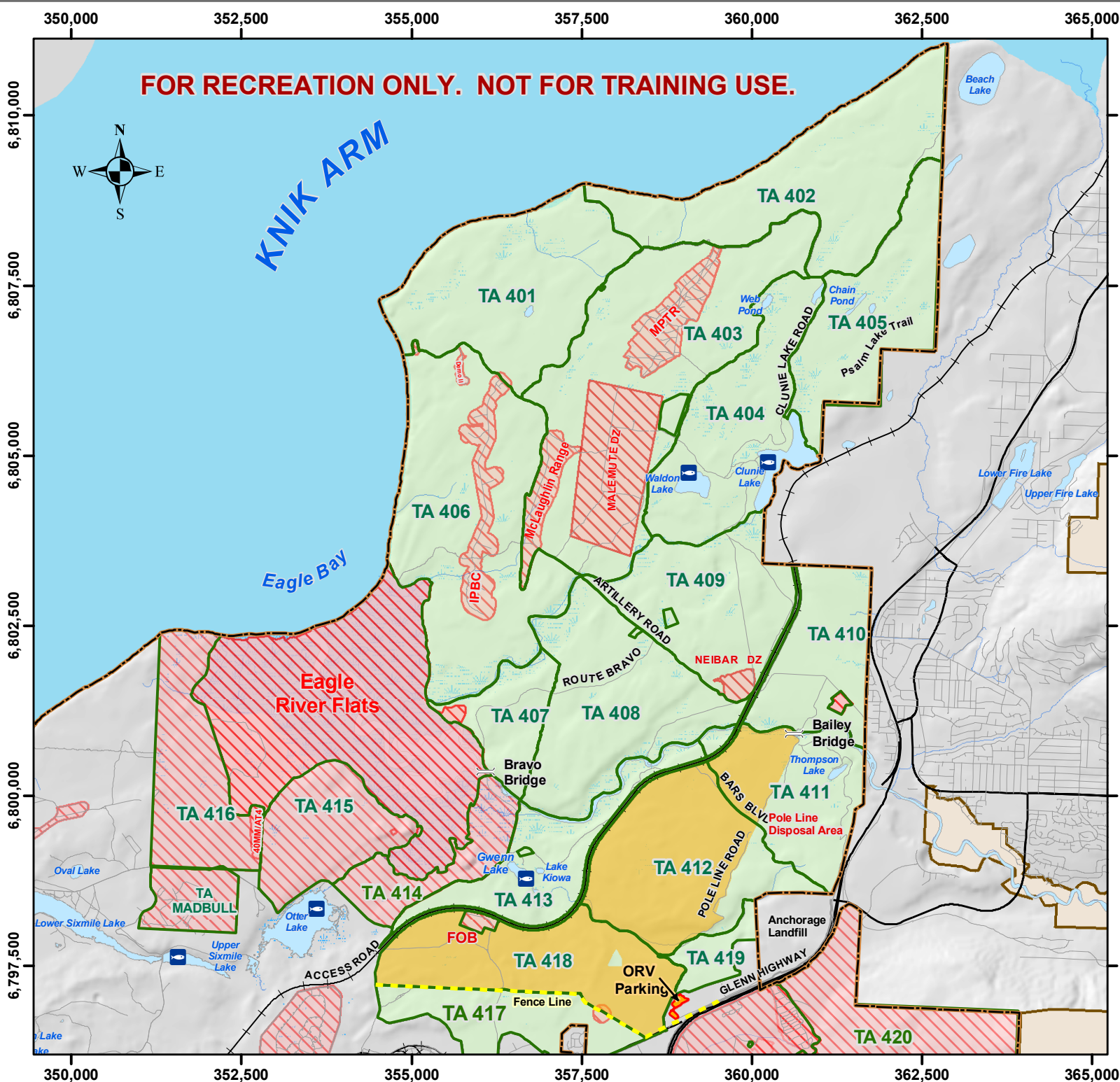


**FOR RECREATION ONLY. NOT FOR TRAINING USE.**



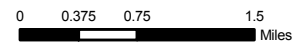
**KNIK ARM**



### JBER-Richardson North Post Summer Recreation Areas

#### Legend

- Off Limits
  - ORV Use Area
  - Recreation Area
  - Training Areas
  - Installation Boundary
  - Railroad (\*\*)
  - Dam - Off Limits
  - Fishing
  - MWR
- \*\* The Alaska Railroad is Off Limits to Recreational Use.



### **WARNING!**

**Be Aware of Large Vehicles Training  
on JBER Richardson Roads. Slow Down  
and Remain Vigilant.**









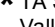
F:\GIS\_Projects\JBER\Conservation\JBER\_Richardson\_Summer\_Recreation\_2012.mxd



Drawn: MKH Date: 05/07/2012  
DATUM: WGS84 UTM Zone 6N

# JBER-Richardson South Post Summer Recreation Areas

## Legend

-  Off Limits
  -  ORV Use Area
  -  Recreation Area
  -  Training Areas
  -  Installation Boundary
  -  Railroad (\*\*)
  -  Dam - Off Limits
  -  Fishing
  -  MWR
- \* TA Site Summit South of Arctic Valley Road is an Area Open for Recreation. Follow Guidance For TA 426.

0 0.5 1 2 Miles



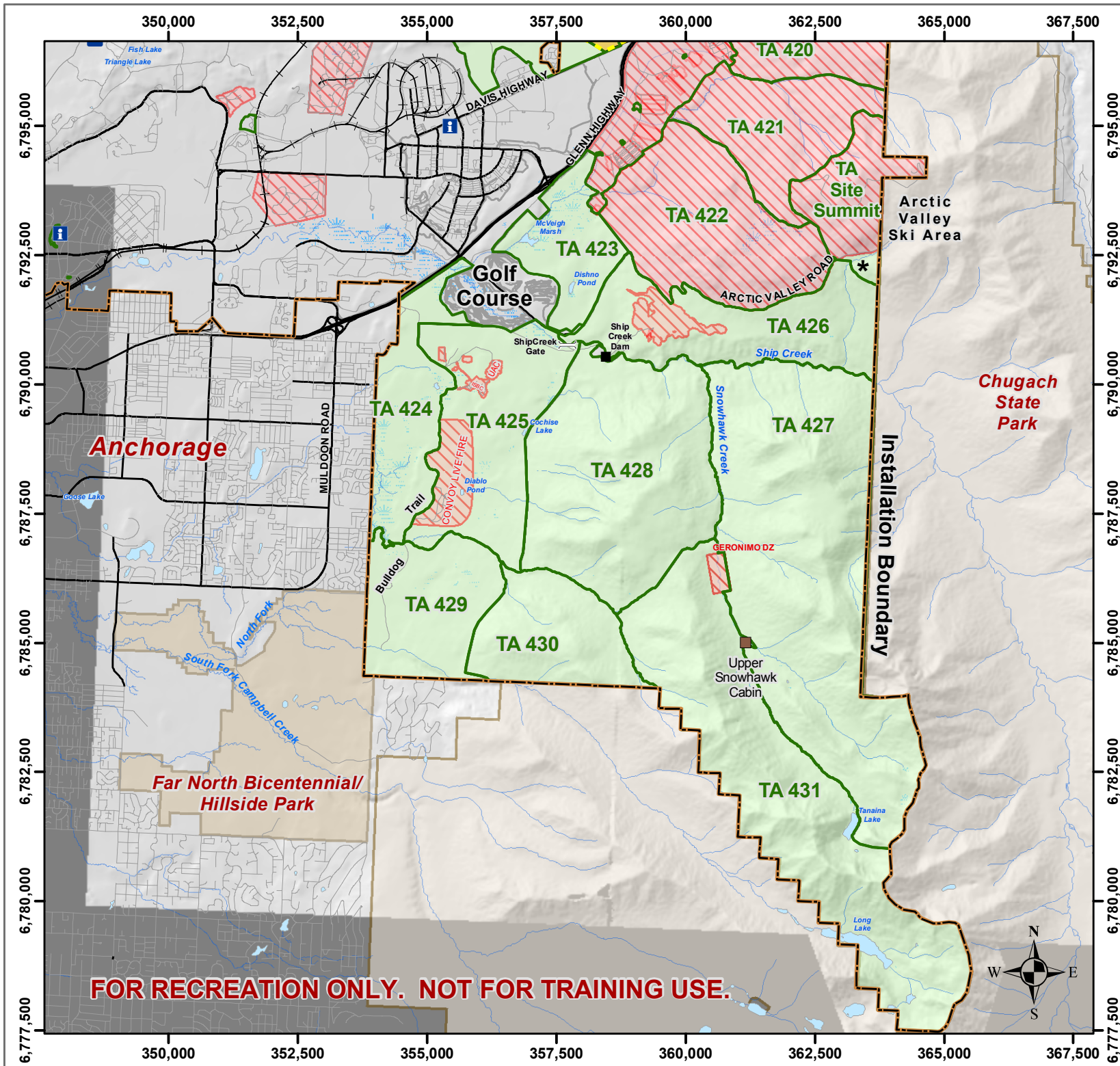
## WARNING!

Be Aware of Large Vehicles Training on JBER Richardson Roads. Slow Down and Remain Vigilant.

F:\GIS\_Projects\JBER\Conservation\JBER\_Richardson\_Summer\_Recreation\_2012.mxd



Drawn: MKH Date: 05/07/2012  
DATUM: WGS84 UTM Zone 6N



**FOR RECREATION ONLY. NOT FOR TRAINING USE.**