

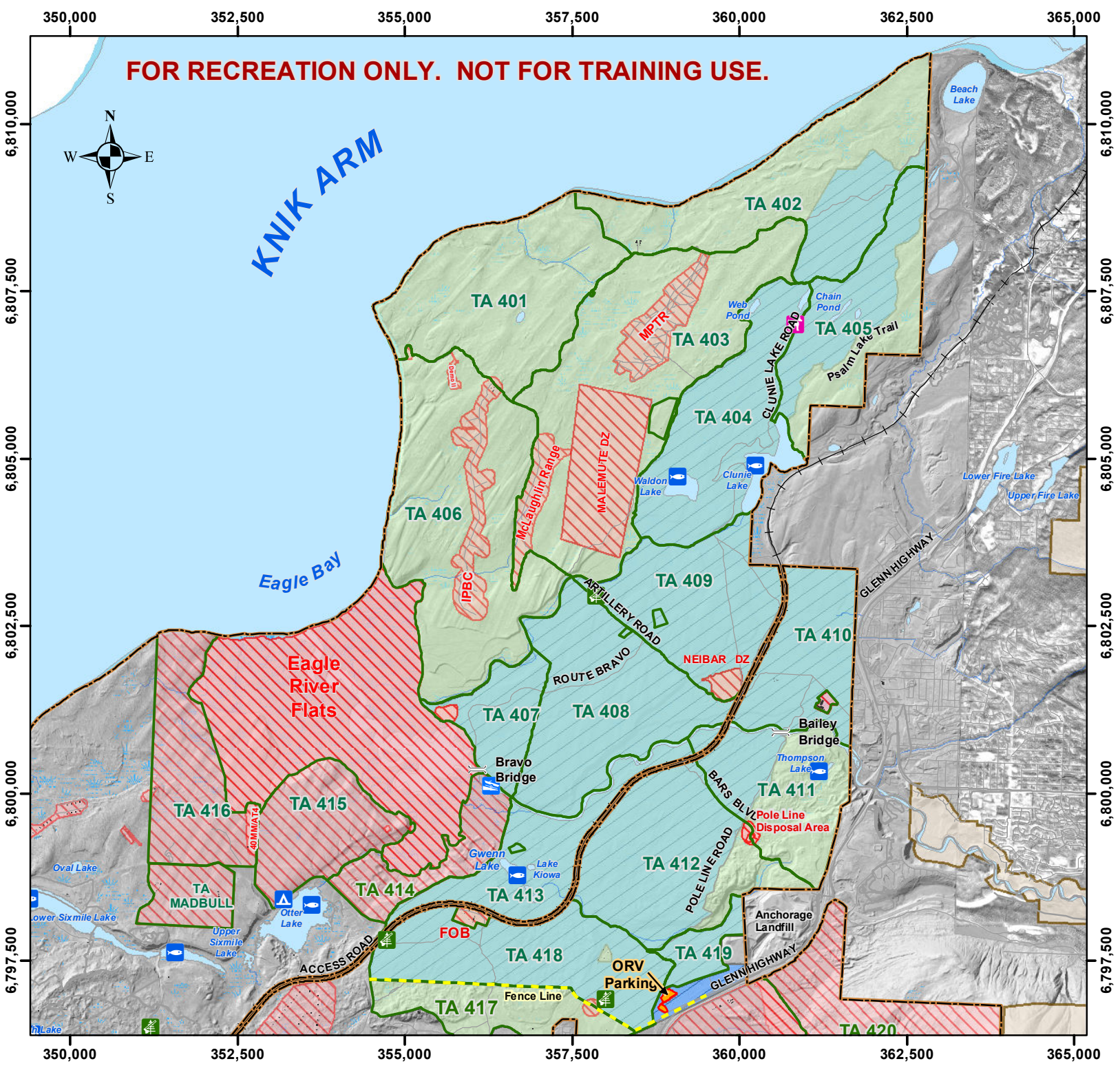
**FOR RECREATION ONLY. NOT FOR TRAINING USE.**



**KNIK ARM**

**Eagle Bay**

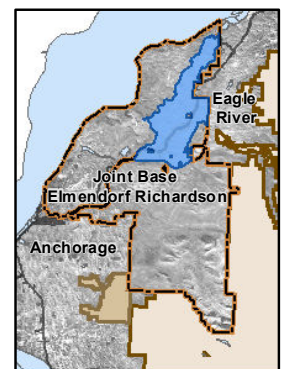
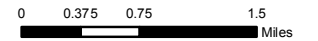
**Eagle River Flats**



**JBER Richardson North Winter Recreation Areas**

**Legend**

- Off Limits
  - Winter Snowmachine Use Area
  - Recreation Area
  - Training Areas
  - Installation Boundary
  - Railroad (\*\*)
  - Dam - Off Limits
  - Fishing
  - MWR
- \* TA Site Summit South of Arctic Valley Road is an Area Open for Recreation. Follow Guidance For TA 426.
- \*\* The Alaska Railroad is Off Limits to Recreational Use.



X:\Projects\673CEG\673CES\CEA\CEANC\Recreation\iSportsman\_2013\_Updates\JBER\_Richardson\_N\_Winter\_Recreation\_2013-2014.mxd



Drawn: JDG Date: 09/13/2013  
DATUM: WGS84 UTM Zone 6N